

PRODUCT DETAIL

LN81/82 Series Single Seated Globe Control Valve



- ▶ High accuracy of adjustment.
- ▶ Simple and reliable structure.
- ▶ Excellent sealing, low leakage.
- ▶ Easy to maintain and disassembly.

Applicable condition:

Normal differential pressure, high adjustment accuracy required and low leakage.

LN83/85 Series Cage Guided Globe Control Valve



- ▶ Cage internal wall guided.
- ▶ Good dynamic stability.
- ▶ Low impetus required.
- ▶ Anti-erosion.
- ▶ High differential pressure allowed.
- ▶ Low maintain cost.

Applicable condition:

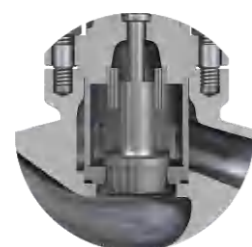
High differential pressure, strong noise, high erosion and temperature.

Main technical parameters

| | | | |
|-----------------|---|-----------------------|-------------------------------|
| Nominal Size | DN15~DN300 | Operating Temperature | -196°C~+593°C |
| Pressure Rating | DIN: PN16 / PN25 / PN40 / PN63 / PN100 ANSI: CL150 / CL300 / CL600 | | |
| Characteristics | Equal percentage, Linear, Quickly open | | Rangeability: 30:1/50:1/100:1 |
| Seat leakage | Class IV,V, VI according to ANSI B16.104 | | |

Main technical parameters

| | | | |
|-----------------|---|-----------------------|--|
| Nominal Size | DN40~DN400 | Operating Temperature | LN83:-40°C~+150°C LN85:-80°C~+260°C |
| Pressure Rating | DIN : PN16 / PN25 / PN40 / PN63 / PN100 ANSI : CL150 / CL300 / CL600 | | |
| Characteristics | Equal percentage, linear, Quickly open | | Rangeability: 50:1 |
| Seat leakage | Class IV, V, VI according to ANSI B16.104 | | |



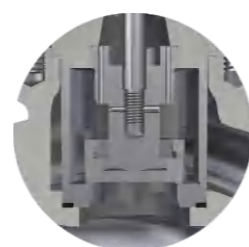
LN8100

Top Guided Single-seated



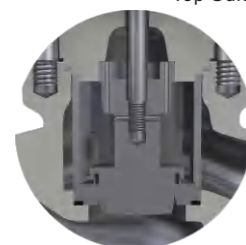
LN8110

Perforated Cage Single-Seated



LN8120

Quick Open Type Single-Seated



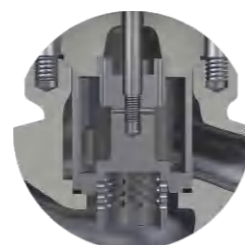
LN8130

Soft Seal Single-seated



LN8140

Perforated Cage Soft Seal Single-Seated



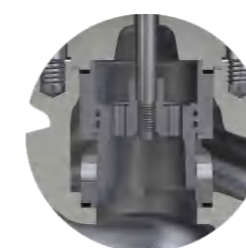
LN8200

Double Guided Single-Seated



LN8220

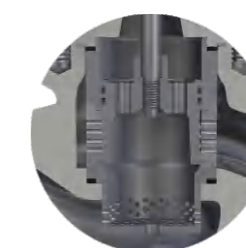
Low Noise Double Guided Single-Seated



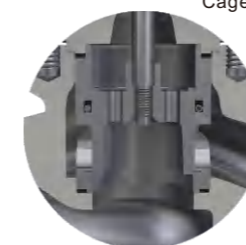
LN8300
Cage Guided



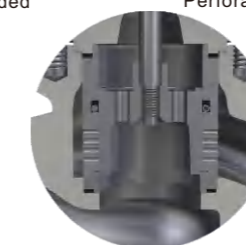
LN8310
Perforated Cage Guided



LN8320
Low Noise Cage Guided



LN8500
Cage Guided



LN8510
Perforated Cage Guided



LN8520
Low Noise Cage Guided



LN8550
Double Cages Guided

LN87 Series Cage Guided Globe Control Valve



- ▶ Cage internal wall guided.
- ▶ Good dynamic stability.
- ▶ Low impetus required.
- ▶ Anti-erosion.
- ▶ High differential pressure allowed.
- ▶ Low maintain cost.

Applicable condition:

High differential pressure, strong noise, high erosion and temperature.

LM8 Series High Pressure Globe Control Valve



- ▶ Top guided.
- ▶ High accuracy and sealing performance.
- ▶ Simple structure and strong applicability.
- ▶ Multi-hole cage are good at reduce pressure and noise.
- ▶ High anti gas etching performance.

Applicable condition:

Serious condition with high differential pressure.

Main technical parameters

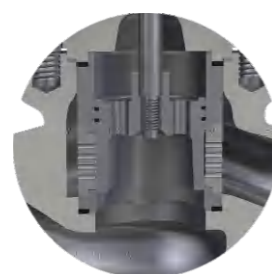
| | | | |
|-----------------|---|-----------------------|--------------------|
| Nominal Size | DN40~DN400 | Operating Temperature | -196°C~+593°C |
| Pressure Rating | DIN : PN16 / PN25 / PN40 / PN63 / PN100 ANSI : CL150 / CL300 / CL600 | | |
| Characteristics | Equal percentage, Linear, Quickly open | | Rangeability: 50:1 |
| Seat leakage | Class IV, V, VI according to ANSI B16.104 | | |

Main technical parameters

| | | | |
|------------------|---|-----------------------|--------------------|
| Nominal Size | DN25~DN300 | Operating temperature | -196°C~+593°C |
| Nominal Pressure | DIN : PN160/PN250 ANSI : CL900/CL1500/CL2500 | | |
| Characteristics | Equal percentage, Linear, Quickly open | | Rangeability: 50:1 |
| Seat leakage | Class IV, V, VI according to ANSI B16.104 | | |



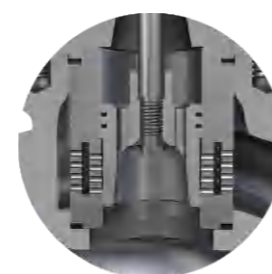
LN8700
Cage Guided



LN8710
Perforated Cage Guided



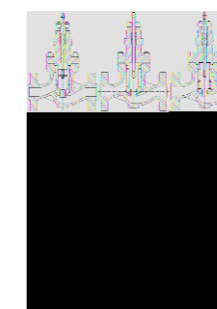
LN8720
Low Noise Cage Guided



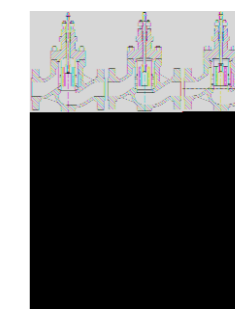
LN8750
Double Cages



Lm8110
High Pressure Perforated Cage
Single-Seated Control Valve



Lm8200
High Pressure Double Guided
Single-Seated Control Valve



Lm8500
High Pressure Cage Guided
Control Valve(Spring-Energized Ring)



Lm8700
High Pressure Cage Guided
Control Valve(Piston Ring)

SN5 Series Soft-seal O-type Ball Valve



- ▶ Full-port design
- ▶ Excellent cut off function
- ▶ Smallest fluid pressure drop
- ▶ Static free

Applicable condition:
Suitable for cut off liquid and gas. Metal seal are suit for the media with solid particles or slurries under various temperatures.

SN5 Series Metal-seal O-type Ball Valve



- ▶ Full-port design
- ▶ Excellent cut off function
- ▶ Smallest fluid pressure drop
- ▶ Static free

Applicable condition:
Suitable for cut off liquid and gas. Metal seal are suit for the media with solid particles or slurries under various temperatures.

Main technical parameters

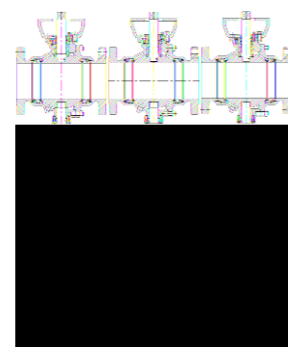
| | | | |
|-----------------|--|-----------------------|--------------|
| Nominal Size | DN15~DN600 | Operating Temperature | -46°C~+200°C |
| Pressure Rating | DIN : PN16 / PN25 / PN40 ANSI : CL150 / CL300 | | |
| Characteristics | Quickly open | | |
| Seat leakage | Bubble Tight / Zero Leakage | | |

Main technical parameters

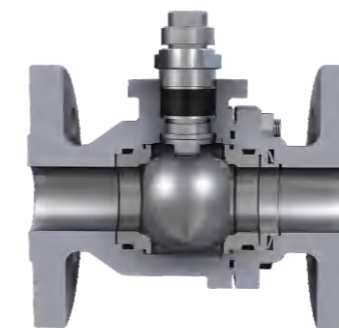
| | | | |
|-----------------|---|-----------------------|--------------|
| Nominal Size | DN15~DN400 | Operating Temperature | -46°C~+538°C |
| Pressure Rating | DIN : PN160 / PN250 ANSI : CL900 / CL1500 / CL2500 | | |
| Characteristics | Quickly open | | |
| Seat leakage | Bubble Tight / Zero Leakage | | |



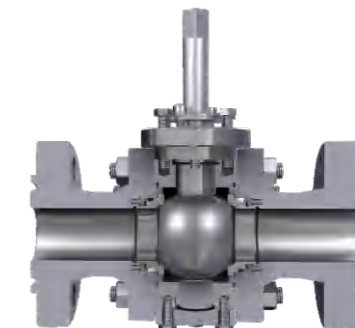
Floating Type Soft-seal Ball Valve



Trunnion Type Soft Seat Ball Valve



Floating Type Metal Seat Ball Valve



Trunnion Type Metal Seat Ball Valve

VN6 Series V-notch Ball Valve



- ▶ V-type notch can cut off the slurries media into smaller pieces.
- ▶ Light valve weight.
- ▶ Large rangeability.
- ▶ Free runner.

Applicable condition:
Paper & pulp, waste water, fibre or slurry.

CN8 Series Eccentric Rotary Control Valve



- ▶ Integrated structure.
- ▶ Small pressure drop.
- ▶ Special stem structure to reduce abrasion.
- ▶ Excellent rigidity and stability.
- ▶ Large output torque.

Applicable condition:
Especially suitable for slurry condition.

Main technical parameters

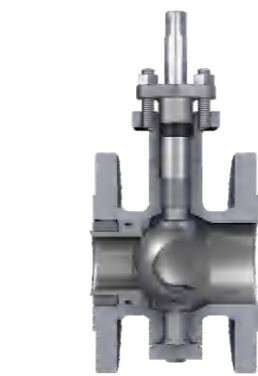
| | | | |
|-----------------|--|-----------------------|--------------|
| Nominal Size | DN20~DN300 | Operating Temperature | -46°C~+400°C |
| Pressure Rating | DIN: PN16 / PN25 / PN40 ANSI: CL150 / CL300 | | |
| Characteristics | Approximately equal percentage | Rangeability: 300:1 | |
| Seat leakage | Class IV,V, VI according to ANSI B16.104 | | |

Main technical parameters

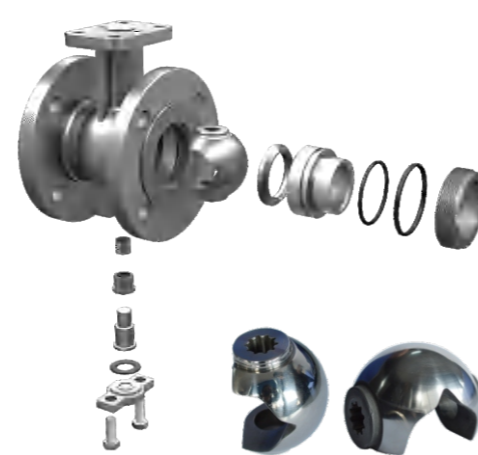
| | | | |
|-----------------|---|-----------------------|--------------|
| Nominal Size | DN20~DN300 | Operating Temperature | -46°C~+450°C |
| Pressure Rating | DIN: PN16 / PN25 / PN40 / PN63 / PN100 ANSI: CL150 / CL300 / CL600 | | |
| Characteristics | Approximately equal percentage | Rangeability: 100:1 | |
| Seat leakage | Class IV,V, VI according to ANSI B16.104 | | |



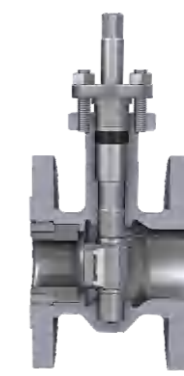
Soft-seal V-notch Ball Valve



Metal-seal V-notch Ball Valve



Soft-seal Eccentric Rotary Control Valve



Metal-seal Eccentric Rotary Control Valve